

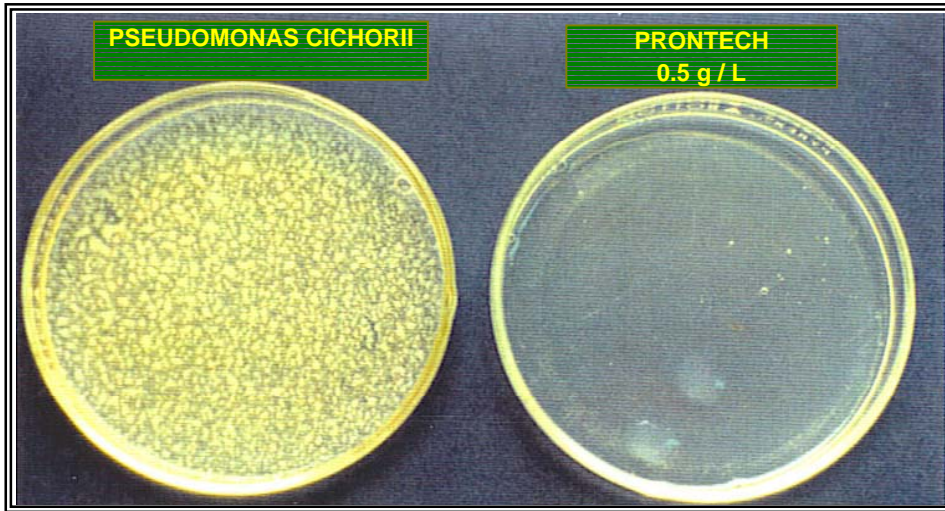
SAMPLE IDENTIFICATION

Crop: ASTER Variety: MONTECASINO Age: Various

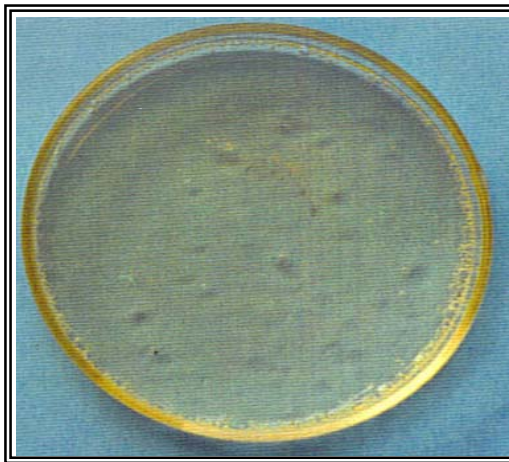
ISOLATION FROM

Plant Leaves Root Bulb Flower Cormo Rhizome Soil Stem Others

LABORATORY	BACTERIUM / FUNGUS TO	PRODUC (CHEMICAL)	DOSAGE	RESULT	
23.862	Agrobacterium t.	PRONTECH	0.5 g / L		Fungistatic
				100%	



RESULT



Viability Trial

Agrobacterium t.

PRONTECH 0.5 g / L

1	6	2003
dd	mm	aa

SPONSOR

PHYTOPATHOLOGY

RESULT DATA

FLORAMERICA S.A. Selection "IDEA" PHITOPATHOLOGY LABORATORY FARM: SAN CARLOS - CAJICA	EVALUATION OF FUNGICIDES "IN VITRO"	SPONSOR PROMOTORAS UNIDAS LTDA		
		2	5	2003
		dd	mm	yy

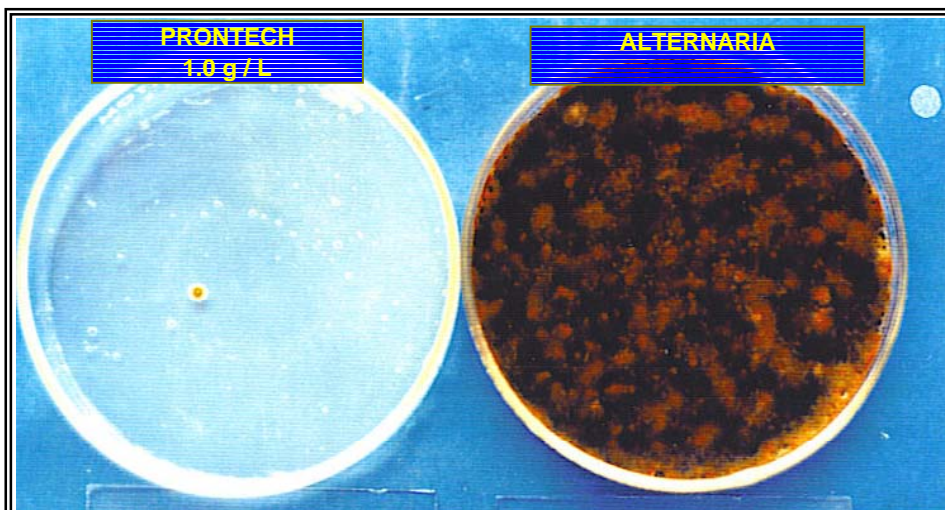
SAMPLE IDENTIFICATION

Crop: Pool of Stock and Carnatios Variety: Various Age: Various

ISOLATION FROM

Plant Leaves Root Bulb Flower Cormo Rhizome Soil Stem Others

LABORATORY	BACTERIUM / FUNGUS TO	PRODUC (CHEMICAL)	DOSAGE	RESULT	
				Fungicide	Fungistatic
20.676	Alternaria	PRONTECH	1.0 g / L	100%	



RESULT

Viability Trial

Alternaria

PRONTECH 1.0 g / L

6	6	2003
dd	mm	aa

SPONSOR

PHYTOPATHOLOGY

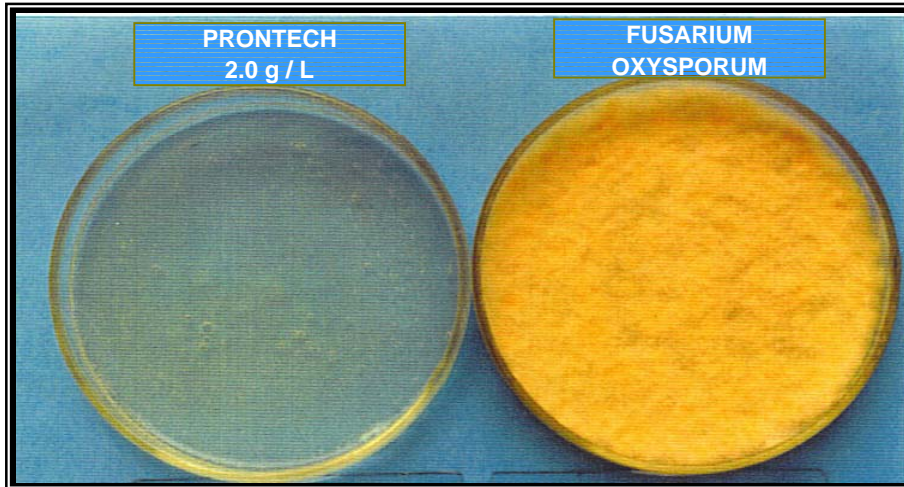
RESULT DATA

SAMPLE IDENTIFICATION

Crop: Carnation Variety: Various Age: Various

ISOLATION FROM									
Plant	Leaves	Root	Bulb	Flower	Cormo	Rhizome	Soil	Stem	Others
<input type="radio"/>	<input type="radio"/>	<input type="radio"/>	<input type="radio"/>	<input type="radio"/>	<input type="radio"/>	<input type="radio"/>	<input type="radio"/>	<input checked="" type="radio"/>	<input type="radio"/>

LABORATORY	BACTERIUM / FUNGUS TO	PRODUC (CHEMICAL)	DOSAGE	RESULT	
24.677	Fusarium oxysporum	PRONTECH	2.0 g / L	Fungicide	Fungistatic
				100%	



RESULT

Viability Trial

Fusarium oxysporum

PRONTECH 2.0 g / L

15	8	2003
dd	mm	aa

_____ SPONSOR

_____ PHYTOPATHOLOGY

RESULT DATA

FLORAMERICA S.A. Selection "IDEA" PHITOPATHOLOGY LABORATORY FARM: SAN CARLOS - CAJICA	EVALUATION OF FUNGICIDES "IN VITRO"	SPONSOR PROMOTORAS UNIDAS LTDA		
		2	5	2003
		dd	mm	yy

SAMPLE IDENTIFICATION

Crop: Pool Of Pompon and Roses

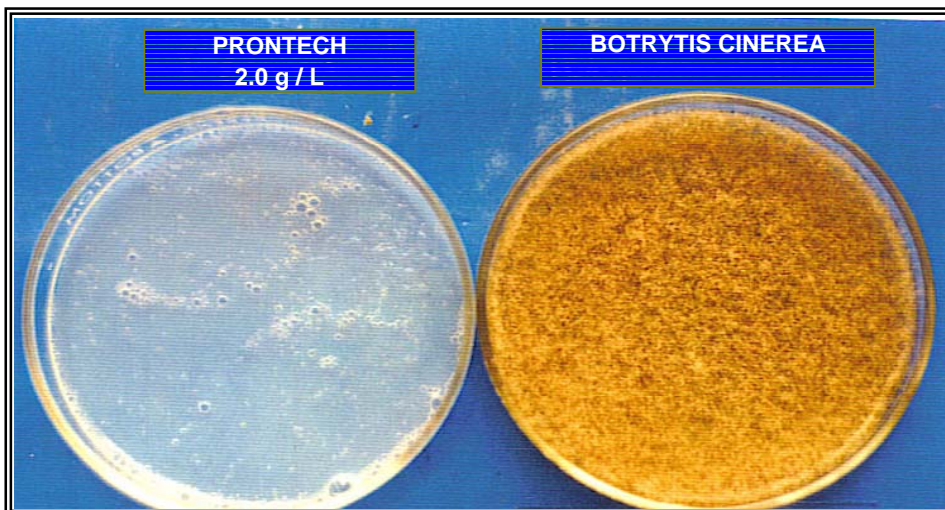
Variety: Various

Age: Various

ISOLATION FROM

Plant Leaves Root Bulb Flower Cormo Rhizome Soil Stem Others

LABORATORY	BACTERIUM / FUNGUS TO	PRODUC (CHEMICAL)	DOSAGE	RESULT	
20.681	Botrytis cinerea	PRONTECH	2.0 g / L	Fungicide	Fungistatic
				100%	



RESULT

Viability Trial

Botrytis cinerea

PRONTECH 2.0 g / L

6	6	2003
dd	mm	aa

SPONSOR

PHYTOPATHOLOGY

RESULT DATA

FLORAMERICA S.A. Selection "IDEA" PHITOPATHOLOGY LABORATORY FARM: SAN CARLOS - CAJICA	EVALUATION OF FUNGICIDES "IN VITRO"	SPONSOR PROMOTORAS UNIDAS LTDA		
		2	5	2003
		dd	mm	yy

FLORAMERICA S.A. Selection "IDEA" PHITOPATHOLOGY LABORATORY FARM: SAN CARLOS - CAJICA	EVALUATION OF FUNGICIDES "IN VITRO"	SPONSOR PROMOTORAS UNIDAS LTDA		
		2 dd	5 mm	2003 yy

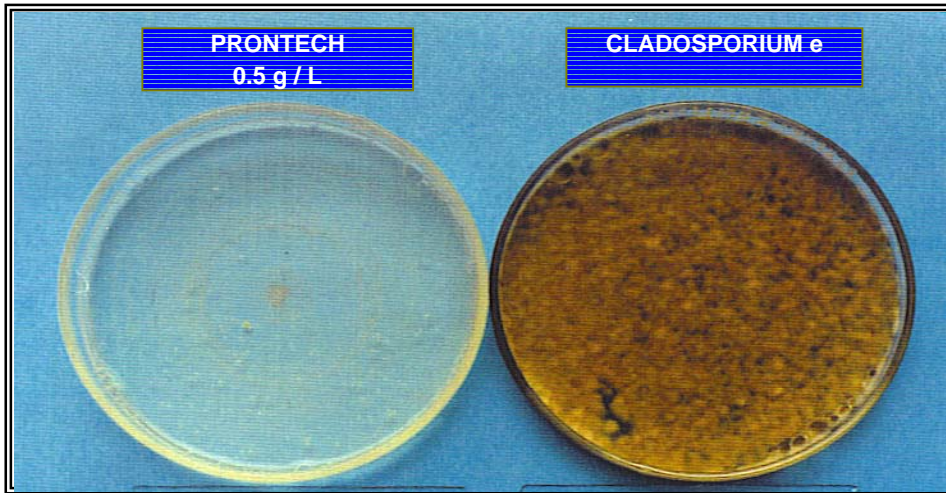
SAMPLE IDENTIFICATION

Crop: Carnation Variety: Various Age: Various

ISOLATION FROM

Plant	Leaves	Root	Bulb	Flower	Cormo	Rhizome	Soil	Stem	Others
<input type="radio"/>	<input checked="" type="radio"/>	<input type="radio"/>	<input type="radio"/>	<input type="radio"/>	<input type="radio"/>	<input type="radio"/>	<input type="radio"/>	<input type="radio"/>	<input type="radio"/>

LABORATORY	BACTERIUM / FUNGUS TO	PRODUC (CHEMICAL)	DOSAGE	RESULT	
				Fungicide	Fungistatic
23.858	Cladocporium e.	PRONTECH	0.5 g / L	100%	



RESULT



- Viability Trial
- Cladosporium e.
- PRONTECH 0.5 g / L

SPONSOR	PHYTOPATHOLOGY	<table border="1"> <tr> <td>15 dd</td> <td>8 mm</td> <td>2003 aa</td> </tr> </table> RESULT DATA	15 dd	8 mm	2003 aa
15 dd	8 mm	2003 aa			

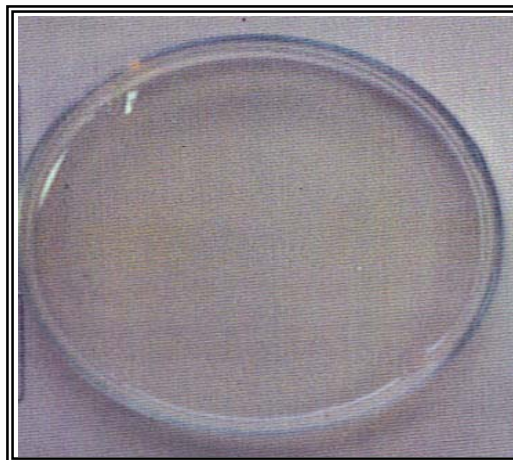
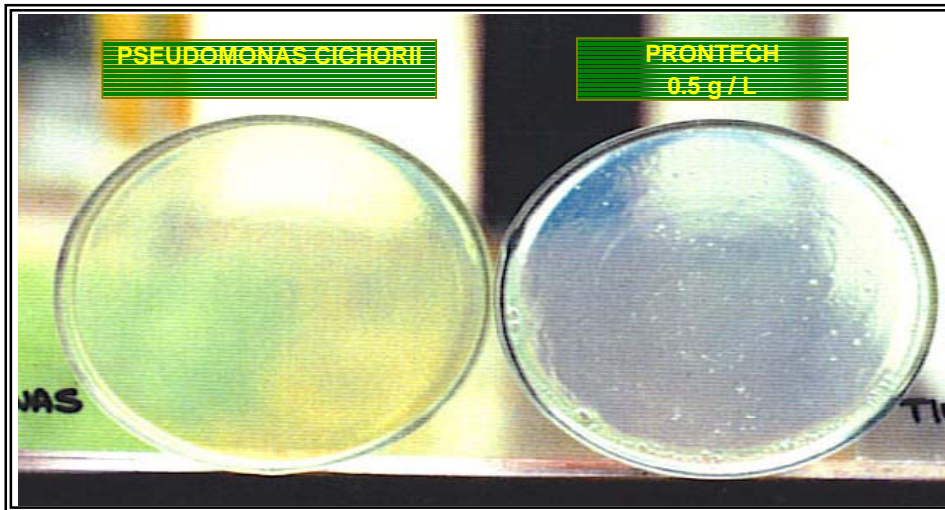
SAMPLE IDENTIFICATION

Crop: POMPON Variety: Various Age: Various

ISOLATION FROM

Plant Leaves Root Bulb Flower Cormo Rhizome Soil Stem Others

LABORATORY	BACTERIUM / FUNGUS TO	PRODUC (CHEMICAL)	DOSAGE	RESULT	
22.508	Pseudomonas c.	PRONTECH	0.5 g / L	Fungicide	Fungistatic
				100%	



RESULT

Viability Trial

Pseudomonas cichorii

PRONTECH 0.5 g / L

1	6	2003
dd	mm	aa

SPONSOR

PHYTOPATHOLOGY

RESULT DATA

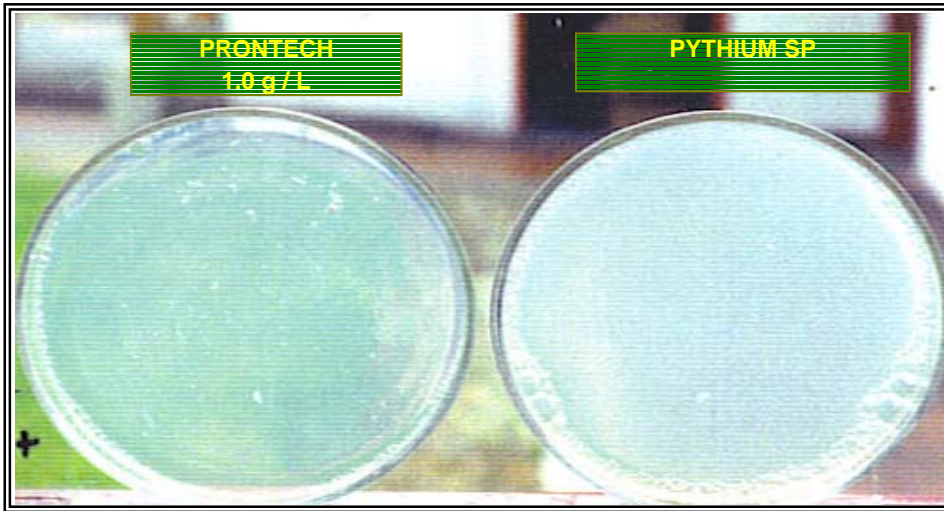
SAMPLE IDENTIFICATION

Crop: GYPSOPHILA Variety: PERFECT Age: 1 - 4 Weeks

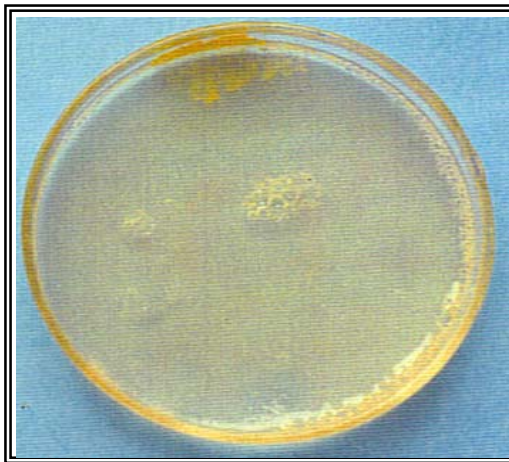
ISOLATION FROM

Plant Leaves Root Bulb Flower Cormo Rhizome Soil Stem Others

LABORATORY	BACTERIUM / FUNGUS TO	PRODUC (CHEMICAL)	DOSAGE	RESULT	
				Fungicide	Fungistatic
26.083	Pythium sp	PRONTECH	1.0 g / L	100%	



RESULT



Viability Trial

Pythium sp

PRONTECH 1.0 g / L

28	6	2003
dd	mm	aa

SPONSOR

PHYTOPATHOLOGY

RESULT DATA

FLORAMERICA S.A. Selection "IDEA" PHITOPATHOLOGY LABORATORY FARM: SAN CARLOS - CAJICA	EVALUATION OF FUNGICIDES "IN VITRO"	SPONSOR PROMOTORAS UNIDAS LTDA		
		2	5	2003
		dd	mm	yy

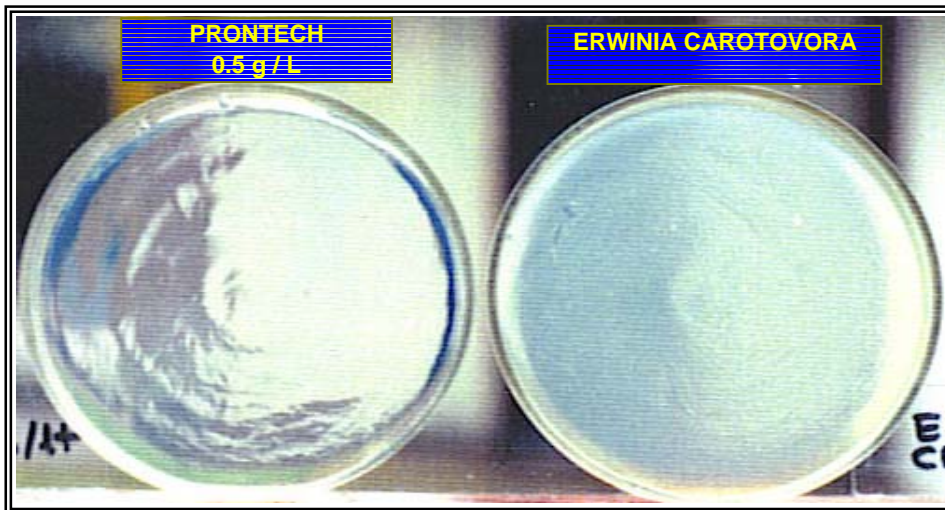
FLORAMERICA S.A. Selection "IDEA" PHITOPATHOLOGY LABORATORY FARM: SAN CARLOS - CAJICA	EVALUATION OF FUNGICIDES "IN VITRO"	SPONSOR PROMOTORAS UNIDAS LTDA		
		2	5	2003
		dd	mm	yy

SAMPLE IDENTIFICATION

Crop: GHIPSOPHILA Variety: PERFECT Age: 1 Week

ISOLATION FROM									
Plant	Leaves	Root	Bulb	Flower	Cormo	Rhizome	Soil	Stem	Others
<input type="radio"/>	<input type="radio"/>	<input checked="" type="radio"/>	<input type="radio"/>	<input type="radio"/>	<input type="radio"/>	<input type="radio"/>	<input type="radio"/>	<input type="radio"/>	<input type="radio"/>

LABORATORY	BACTERIUM / FUNGUS TO	PRODUC (CHEMICAL)	DOSAGE	RESULT	
22.504	Erwinia carotovora	PRONTECH	0.5 g / L	Fungicide	Fungistatic
				100%	



RESULT



Viability Trial

Erwinia carotovora

PRONTECH 0.5 g / L

1	6	2003
dd	mm	aa

SPONSOR

PHYTOPATHOLOGY

RESULT DATA

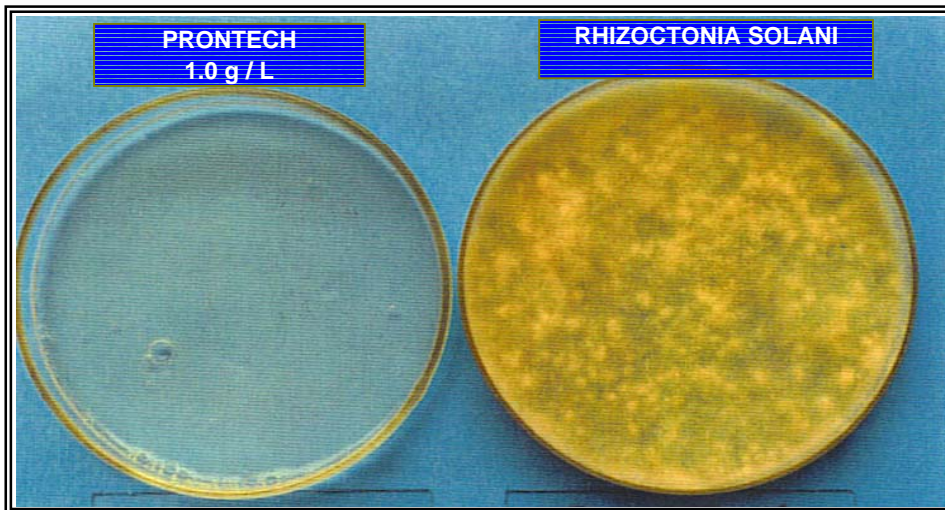
FLORAMERICA S.A. Selection "IDEA" PHITOPATHOLOGY LABORATORY FARM: SAN CARLOS - CAJICA	EVALUATION OF FUNGICIDES "IN VITRO"	SPONSOR PROMOTORAS UNIDAS LTDA		
		2	5	2003
		dd	mm	yy

SAMPLE IDENTIFICATION

Crop: GERBERA Variety: Various Age: Various

ISOLATION FROM									
Plant	Leaves	Root	Bulb	Flower	Cormo	Rhizome	Soil	Stem	Others
<input type="radio"/>	<input type="radio"/>	<input type="radio"/>	<input type="radio"/>	<input type="radio"/>	<input type="radio"/>	<input type="radio"/>	<input type="radio"/>	<input checked="" type="radio"/>	<input type="radio"/>

LABORATORY	BACTERIUM / FUNGUS TO	PRODUC (CHEMICAL)	DOSAGE	RESULT	
23.854	Rhizoctonia solani	PRONTECH	1.0 g / L	Fungicide	Fungistatic
				100%	



RESULT



Viability Trial

Rhizoctonia solani

PRONTECH 1.0 g / L

15	8	2003
dd	mm	aa

_____ SPONSOR

_____ PHYTOPATHOLOGY

RESULT DATA